

ROBOFEED EDGE

High performance robotic wire feeder

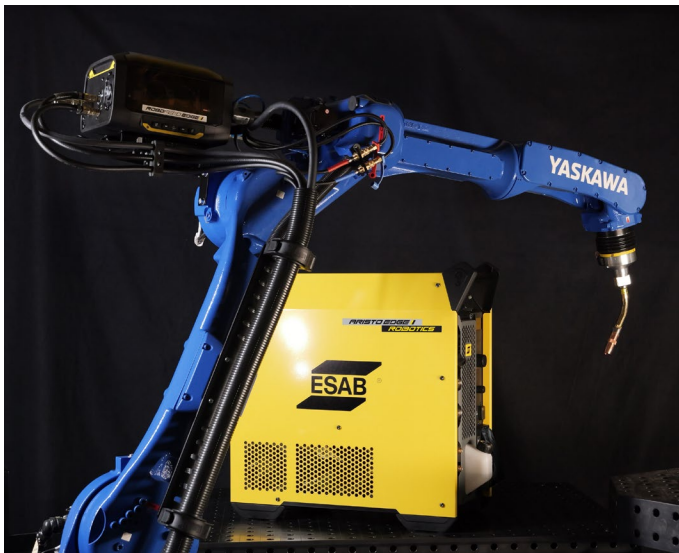
PRECIDRIVE



Front view RoboFeed Edge

Industry

- Industrial and General Fabrication
- Mobile Equipment
- Civil Construction
- Agricultural Equipment
- Transportation



The ESAB RoboSystem solution

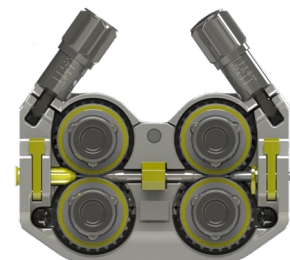
ESAB RoboFeed Edge is a compact and powerful wire feeder developed for the Aristo Edge RoboSystem robotic welding solution.

The Aristo Edge RoboSystem includes the Aristo Edge 500R power supply, RoboFeed Edge wire feeder, an automation gateway (AGW), a variety of torch options and dress kits (bracket and cables) for different robotic systems. All components have been developed to achieve unique synergistic effects together for high performance GMAW welding.

An innovative mounting design allows rapid installation and easy maintenance of the RoboFeed Edge on both hollow wrist (HW) and standard robot arms. Internal LED lights illuminate the feed mechanism allowing feed rollers to be easily and safely changed. Feeder rollers are available up to $\text{Ø}1.6 \text{ mm}$ (1/16 in.).

- Easy to install
- Torch connection features a unique ESAB torch module which allows a high duty cycle with less heat generation
- Integrated wire brake function for accurate wire touch sense results
- Advanced shielding gas control: Digital setup of shielding gas flow for each weld with high potential for shielding gas savings
- PreciDrive wire drive mechanism combined with a high-power density motor maintains precision and agile wire feeding performance to promote consistent weld quality
- Integrated HMI for quick access

Visit esab.com for more information.



PreciDrive wire drive system

ROBOFEED EDGE

Specifications	
Duty Cycle	600A at 60% 500A at 100%
Welding Processes	GMAW (MIG/MAG)
Drive Mechanism	4WD
Wire Feed Speed	0.8 - 35 m/min (32 - 1378 in/min)
Drive Rollers	Ø 38 mm
Wire Dimensions	0.8 – 1.6 mm (.031 – 1/16 in.)
Welding Torch Connector	ESAB TrueArcPin (TAP) or EURO Connector
Power Supply	60 VDC
Power Requirement	48 W
Rated Supply Current	0.8 A
Operating Temperature	-10 to +40°C (14 to 104°F)
Enclosure Class	IP2X
Application Class	S
Certification Mark (Standards)	CE, CSA
Dimension	322 x 235 x 182 mm (12.7 x 9.3 x 7.2 in.)
Weight*	5.5 kg (12.1 lbs)

* Including wear parts and optional kits.

Ordering Information	
Description	Part Number
RoboFeed Edge TrueArcPin (TAP) CE/CSA	0445900880
RoboFeed Edge EURO CE/CSA	0445900881

Accessories	
Description	Part Number
DressKit Yaskawa AR1440	0447790880
DressKit Yaskawa AR1730/2010	0447790881
DressKit Yaskawa AR3120	0447790882
DressKit Fanuc ArcMate 100iD, 100iD/8L-10L, 120iD, 120iD/12L	0447791880
DressKit KUKA KR6-R1840/KR8-R1640	0447792880
DressKit KUKA KR8-R1440 HW	0447792881
DressKit KUKA KR8-R2100 HW	0447792882
DressKit KUKA KR8/KR16/KR20/KR22 - R2010/R1610	0447792883
DressKit KUKA KR20 R3100	0447792884
DressKit ABB IRB 2400	0447793880
DressKit ABB IRB 2600 – 165 & 185 & 2m	0447793881
DressKit ABB IRB 1520ID	0447793882
DressKit ABB IRB 1660ID	0447793883
DressKit ABB IRB 2660ID	0447793884
DressKit ABB IRB 1410	0447793885
DressKit ABB IRB 1600	0447793886

DressKits include Feeder Bracket, Quick connector, Cable bracket and Split box.

ROBOFEED EDGE

Intermediate cables

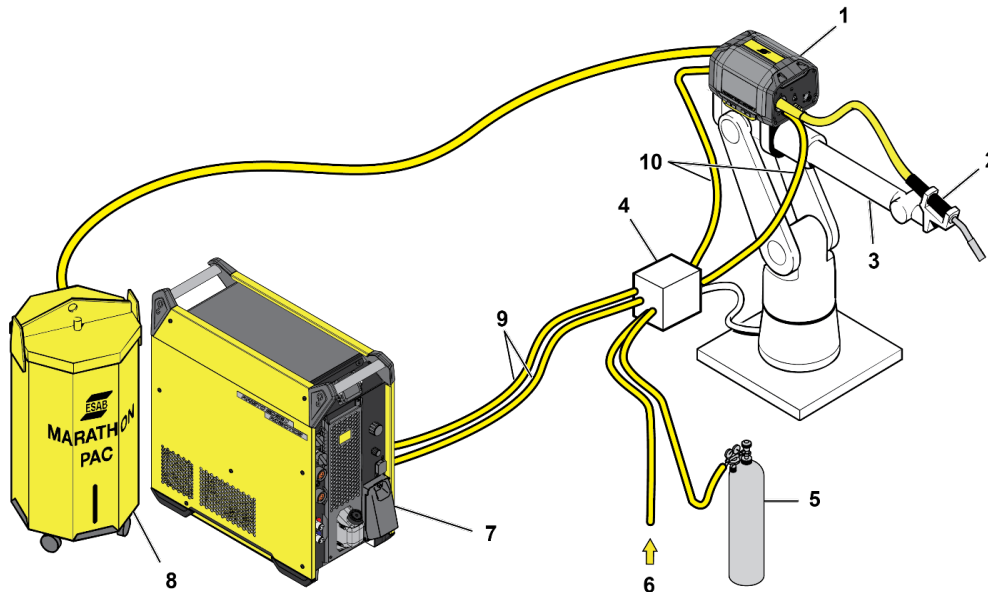
Description	Part Number
Intermediate cable 95mm ² 3.2m (11ft)	0446504880
Intermediate cable 95mm ² 4.6m (15ft)	0446504881
Intermediate cable 120mm ² 3.2m (11ft)	0446504890
Intermediate cable 120mm ² 4.6m (15ft)	0446504891

The Intermediate cable is the cable assembly between wire feeder and split box, universal for water and gas cooled. Same design for Hollow Wrist (HW) and Standard Arm Robots.

Optional

Description	Part Number
I/O connector kit	0447030880

Including 3 digital output and 1 digital input 24V DC on the RoboFeed Edge.



1	Wire feeding unit	2	Robotic torch	3	Robot arm
4	Base cable split box	5	Shielding gas regulator	6	Compressed air
7	Power source with AGW	8	Wire spool	9	Interconnection cable
10	Intermediate cable				

ROBOFEED EDGE

Spare Parts, Feed Rollers

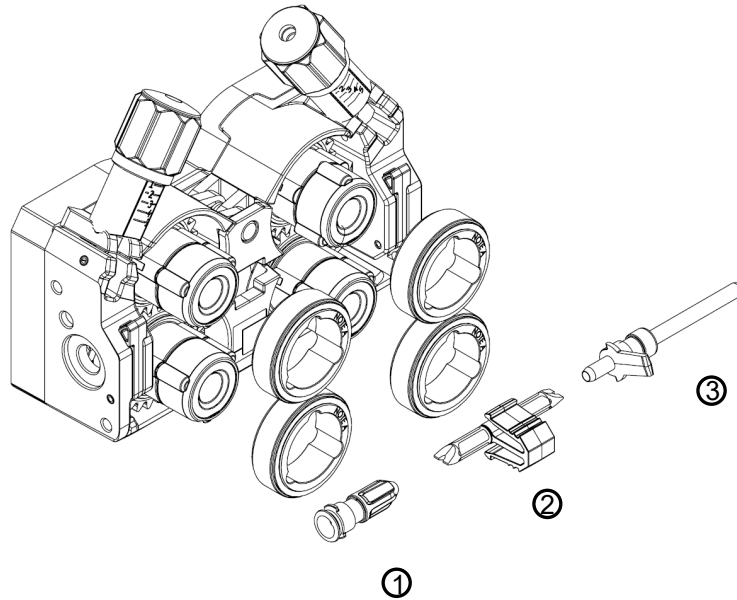
V Groove for Fe/SS/Cored	Wire Diameters [mm]				
Groove / Side 1	0.8	0.9 / 1.0	0.9 / 1.0	1.2	1.4
Groove / Side 2	0.9 / 1.0	0.9 / 1.0	1.2	1.2	1.6
Part Number	0445850002	0445850003	0445850004*	0445850005	0445850006
V-K Groove for Cored Wire	Wire Diameters [mm]				
Groove / Side 1	0.9 / 1.0	1.2	1.2	1.6	
Groove / Side 2	1.2	1.2	1.4	1.6	
Part Number	0445850030	0445850031	0445850032	0445850033	

Fe = Mild Steel; SS = Stainless Steel, * Included in delivery.

Spare Parts, Wire Inlet

Wire Guide for:	(1) Inlet Nozzle	(2) Middle Nozzle	(3) Outlet Nozzle
Fe/SS/Cored 0.6 – 1.6 mm	0446541001*	0446080882*	0445830883* TrueArcPin
			0445830881* Euro

Fe = Mild Steel; SS = Stainless Steel, * Included in delivery.



ESAB / esab.com

